



AGASTYA

M I N E R A L S

INVESTOR PRESENTATION



JAMES BAY GEOLOGY



Agastya 1:

Claims: 38
1957 hectares

Agastya 2:

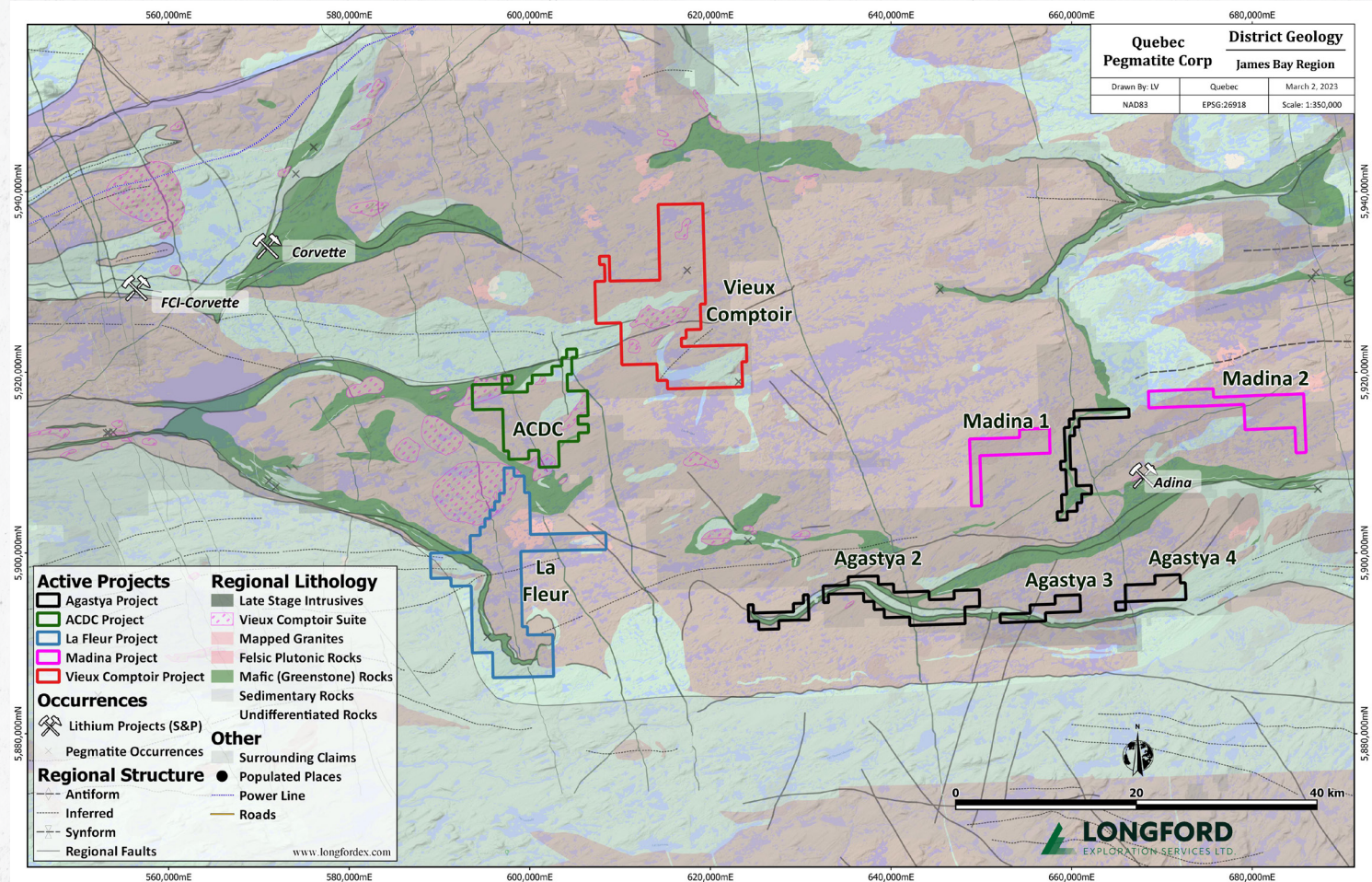
Claims: 108
5578 hectares

Agastya 3:

Claims: 24
1240 hectares

Agastya 4:

Claims: 31
1601 hectares

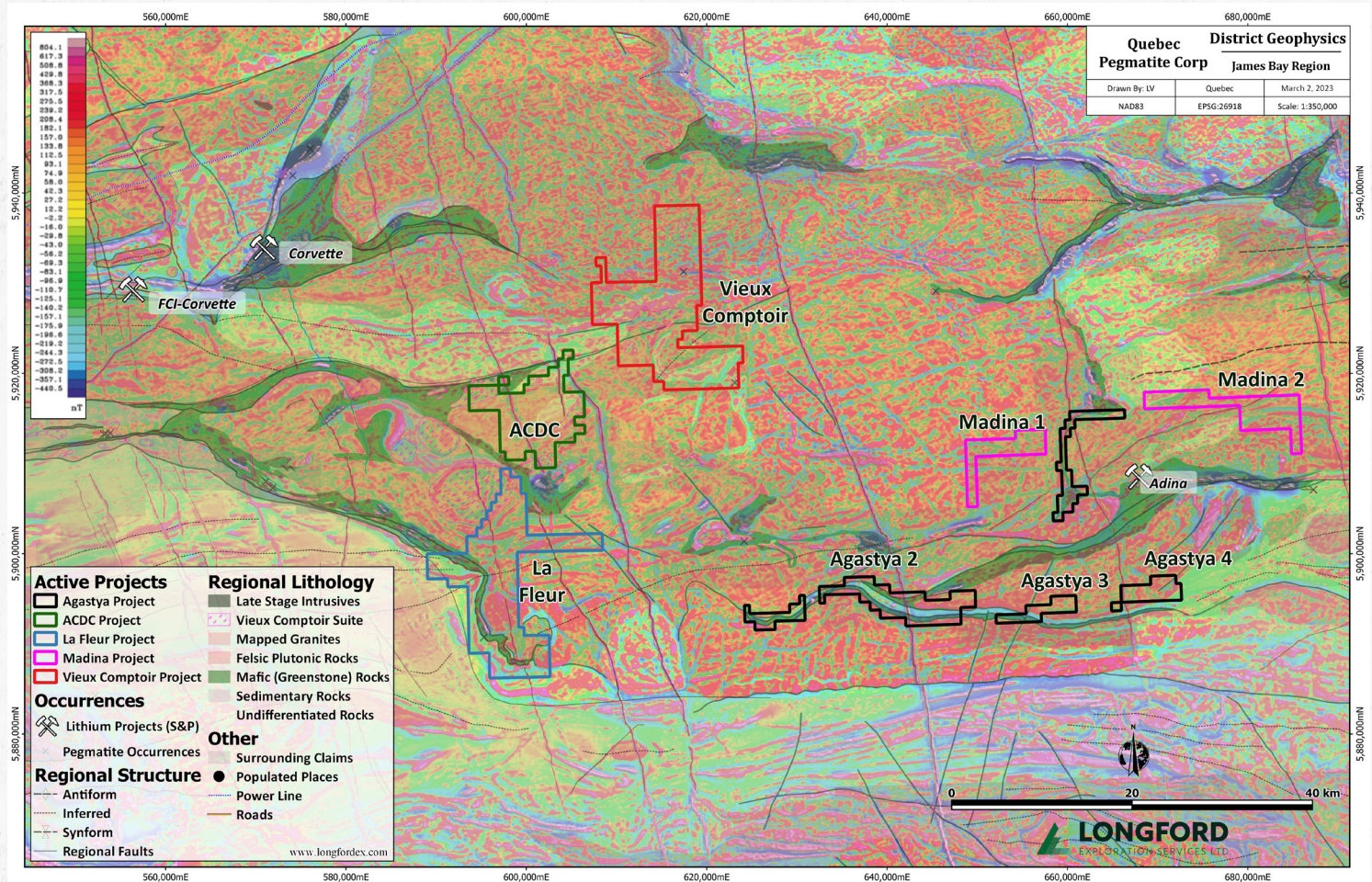


AGASTYA PROPERTIES

The Agastya properties are proximal to Winsome Resources Adina Lithium Discovery and have been acquired along the same prospective greenstone inliers along trend from the Adina lithium discovery. The geology of the properties shares many affinities as at Adina - comprising the critical ingredients; 'greenstones', mafic volcanic rocks, and fertile Vieux Comptoir granitic suite rocks emplaced along a common structural trend.

The projects are also in close proximity to mapped Vieux Comptoir Granitic Suite rocks. The Vieux Comptoir Granitic Suite represents a syntectonic to late - tectonic granites present in the La Grande, Opinaca and Opatoca sub provinces. These rocks are characterized by a usual pegmatitic textures, a granitic composition and the presence of biotite, muscovite, tourmaline and garnet. Locally, hornblende, and lithium bearing beryl or spodumene are present. The setting for a lithium bearing pegmatite dykes is typically within 10km from the causative source, parental granite, where the residual melt becomes may become enriched in Lithium and rare elements. Typically, these dykes maybe emplaced within metavolcanic (greenstones) metasedimentary or other permissive lithologies surrounding the parental granite.

The purpose of the Phase 1 explorations is to systematically determine structural controls on emplacement to allow for effective targeting during phase 2.



JAMES BAY REGION



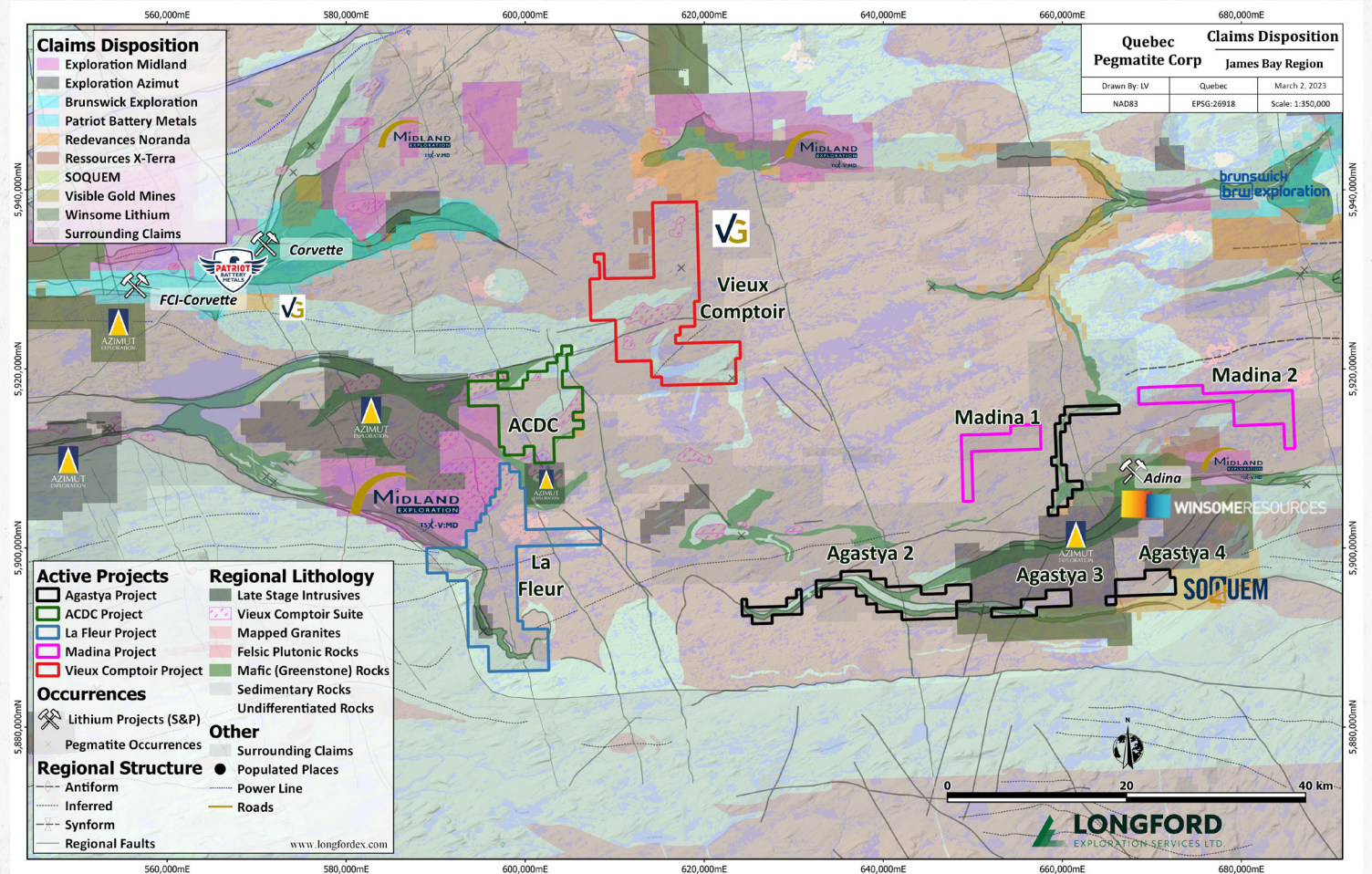
PATRIOT DRILLS HIGHEST GRADE LITHIUM DRILL INTERCEPT TO DATE – 156.9 M INTERVAL OF 2.12% LI2O, INCLUDING 25.0 M OF 5.04% LI2O – AT THE CV5 PEGMATITE, QUEBEC, CANADA

Market Cap: 1.68 billion CAD



ASSAYS FROM ADINA DRILL HOLE AD-22-005 SHOW IMPRESSIVE LITHIUM MINERALISATION, RECORDING 1.34% LI2O OVER 107.6M

Market Cap: 344.50 million AUD



JAMES BAY REGION



AZIMUT IDENTIFIES SIGNIFICANT LITHIUM EXPLORATION POTENTIAL ON ITS EXTENSIVE LAND HOLDINGS IN THE JAMES BAY REGION, QUEBEC, CANADA

Market Cap: 109.04 million CAD



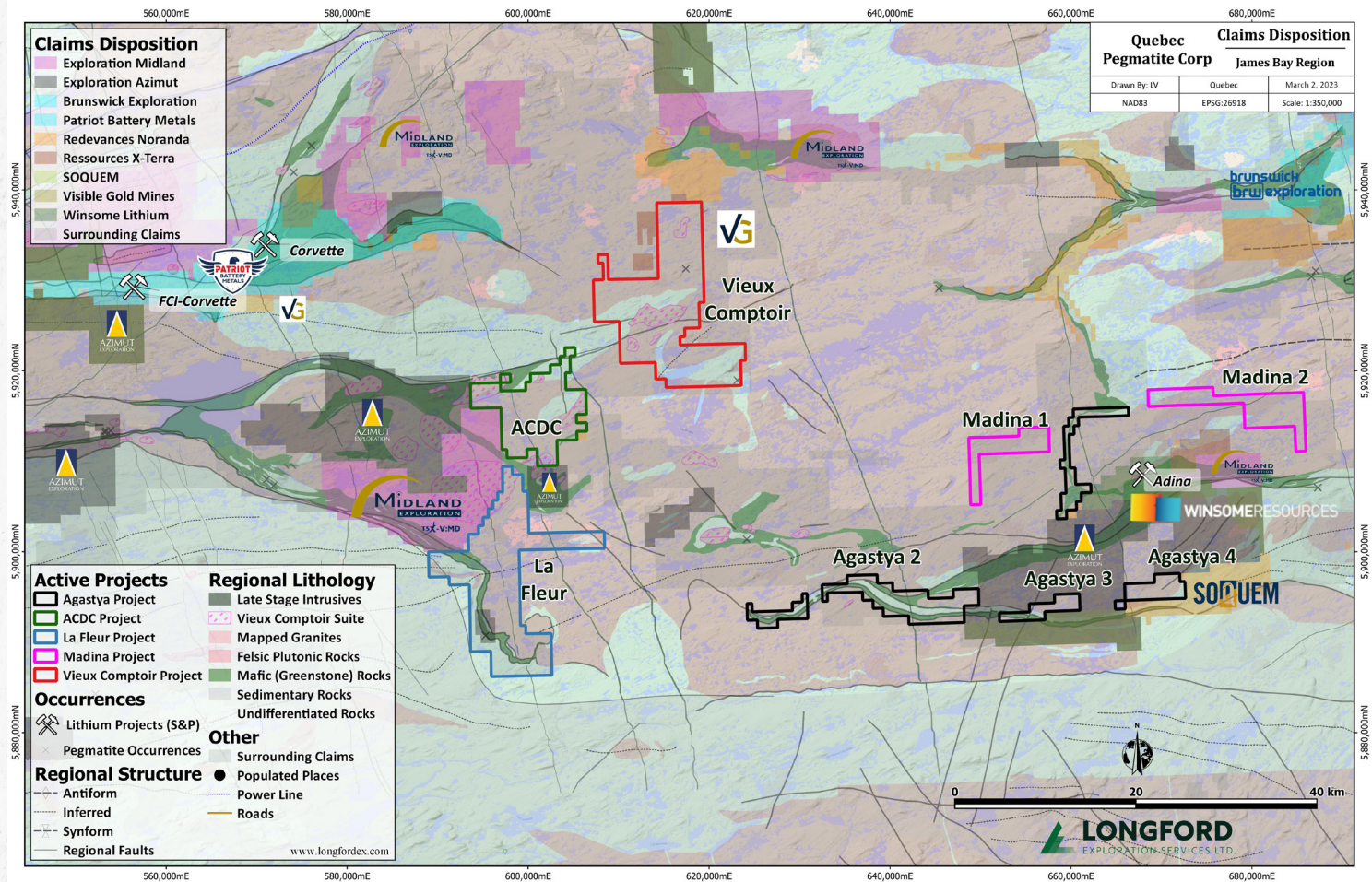
MIDLAND IDENTIFIES SEVERAL PROMISING PROJECTS WITH SIGNIFICANT LITHIUM POTENTIAL AMONGST ITS EXTENSIVE LAND POSITION IN THE JAMES BAY AREA

Market Cap: 46.98 million CAD



BRUNSWICK EXPLORATION HAS NOW SECURED 46 CLAIM BLOCKS (OVER 3,100 CLAIMS) IN THE JAMES BAY REGION THROUGH DIRECT STAKING AND OPTIONS AGREEMENTS

Market Cap: 180.28 million CAD





AGASTYA
M I N E R A L S

kal@bullruncapital.ca

